

40,000-person waste reduction project

Goal / Reduce burnable waste per person per day from 1025g to 850g

Let's work together as One Team!

For weight loss ①Paper waste (Recyclable paper) Waste sorting ②Drain food waste Let's take action

Burnable garbage contains a lot of paper waste (used paper) and food waste, so the amount of garbage can be reduced by sorting and draining. Let's all work hard to achieve our goals!

How to separate and dispose of recyclable resources and garbage

The city only collects **recyclables and trash from households.**

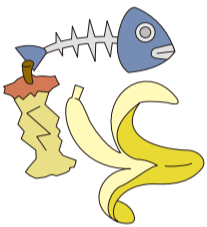
Burnable garbage

Please put it in a garbage bag designated by Shimabara City. Please drain the water from your food waste thoroughly.

Please cut into pieces under 50cm and place in the designated bags.



Kitchen waste:
Drain thoroughly



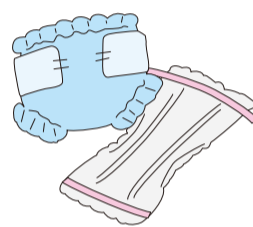
Clothing, bags, shoes, belts



Used oil,
soaked into paper
or cloth



Disposable diapers -
remove any waste



**Fallen leaves
and grass**



recyclable waste

Please wash the inside of cans, glass bottles, plastic bottles and other plastic containers and packaging and dispose of them in a semi-transparent or transparent bag so that the contents can be seen.



Bottles : Juice, alcohol, seasonings,
energy drinks, jam bottles, etc.

※ Dispose of window glass and cups as non-combustible waste.

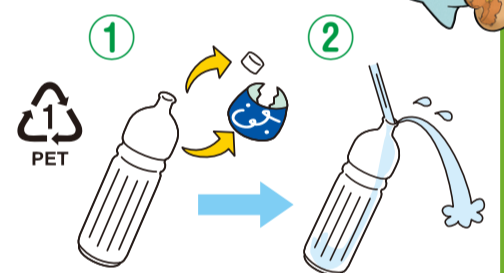


Cans: Juice, beer, snacks,
canned food, seaweed cans, etc.
with these marks



PET bottle caps and labels are plastic container packaging

※ Please dispose of them without crushing them.



Plastic containers and packaging

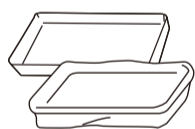


Please give me anything with this mark



Cups and packs

• Containers for instant noodles, ice cream, juice, etc.
• Packs for eggs, tofu, etc.



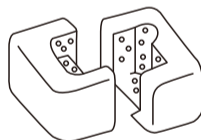
Trays

Food trays
Lunch containers



Packaging materials

• Styrofoam
• Air cushion material, etc.
※ Dispose of dirty styrofoam in burnable waste.



Plastic bags and films

• Snacks, bread bags, shopping bags, etc.
• Packaging film for candy, pudding, yogurt, etc.

Bottles
Shampoo and detergent containers
Dressing containers, etc.

PET bottle labels and caps

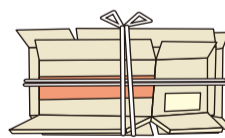
Waste paper

Remove any dirt and tie the item crosswise with string, or place it in a paper bag or a transparent (semi-transparent) plastic bag before disposal.

Newspapers and flyers



cardboard



Paper containers and packaging, magazines, and miscellaneous paper

Mounting boards and paper bags

Cardboard boxes



Paper cups

Shredded paper



magazine



Memo paper



Other plastics and other non-burnable items should be placed in semi-transparent or transparent bags so that the contents can be seen. ※ If the item does not fit in the bag, please write "Not needed" on a piece of paper and put it out.

Other plastics

Buckets, washbasins, CDs, DVDs,
plastic toys, dish storage containers, etc.



Other non-combustible materials

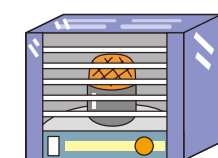
Small household appliances :

vacuum cleaners, microwave ovens, rice cookers, irons, electric fans, etc.



Stove, fan heater,

kerosene used up



Separate each item and write the name of the item before sending it out



Gas cylinders and spray cans

To prevent accidents, be sure to use up the product before disposing of it.

Dry cell batteries

Thermometers and blood pressure monitors containing mercury



Rechargeable batteries such as lithium-ion batteries and nickel-cadmium batteries can be disposed of at electronics stores.

lighter



Fragile items and blades

Wrap it in paper to make sure it's safe

Glass and ceramics



treasures



bicycle



※For electric vehicles, please remove the battery before disposal. Batteries can be purchased at electronics retailers